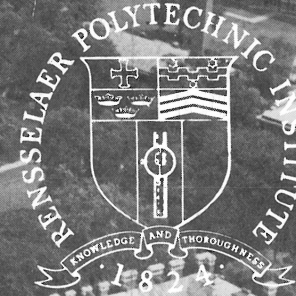


An aerial photograph of the Rensselaer Polytechnic Institute campus. The image shows several large, multi-story brick buildings with flat roofs, some with multiple chimneys. There are large open fields, some of which appear to be sports fields or baseball diamonds. A winding road or path runs through the campus. The overall scene is a dense collection of institutional buildings and open spaces.

PHI EPSILON PHI

*Presents*



RENSSELAER  
POLYTECHNIC  
INSTITUTE



FOR HIS UNSELFISH EFFORTS in assisting us in our travails, the active chapter of Phi Epsilon Phi respectfully dedicates this brochure to the everlasting memory of Brother Edwin C. Chamberlain, who for many years has been our staunch supporter, especially in our efforts to become an active chapter of Sigma Chi.

It was just before his death that he, as president of Phi Epsilon Phi Corporation, wrote the following introduction to our brochure:

*To the men of Sigma Chi,*

*This little brochure attempts to tell you briefly about Phi Epsilon Phi Fraternity and Rensselaer Polytechnic Institute, for your consideration and appraisal of our Petition which is now before you for vote.*

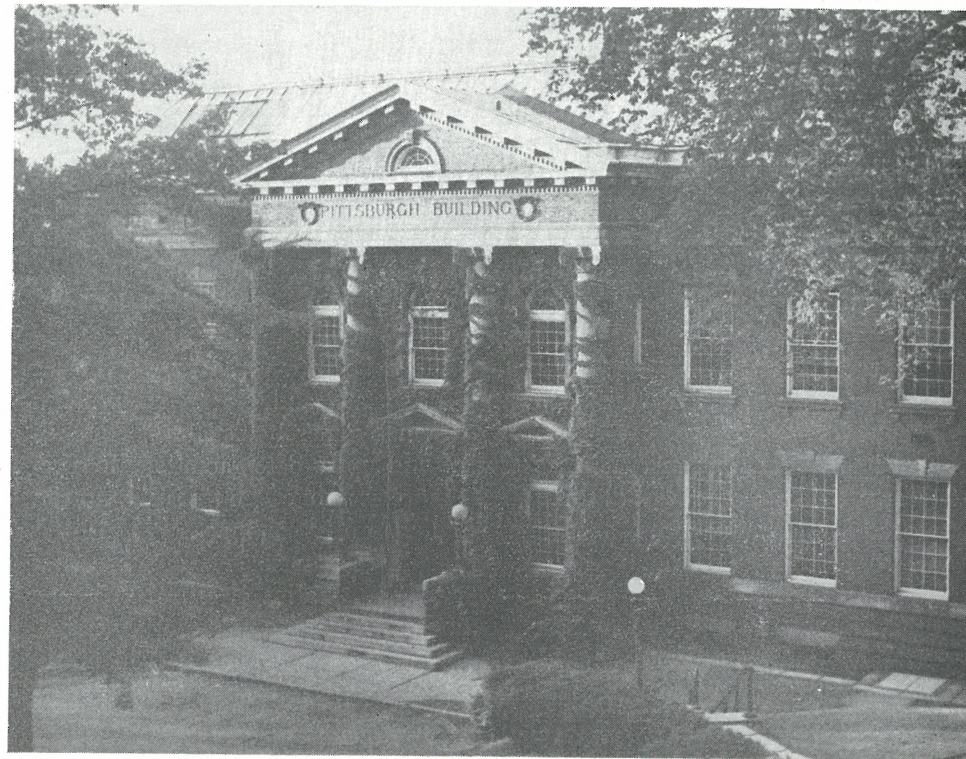
*We are genuinely grateful to our host of friends among Sigma Chi chapters in and out of our district, past and present, Sigma Chi national officers, officials of Rensselaer Polytechnic Institute, its fraternities and its Interfraternity Council for their generous words of commendation contained herein. We are further appreciative of the efforts of those among you who, at the Seattle conclave last year and thereafter, have honored Rensselaer Polytechnic Institute and Phi Epsilon Phi with preferential rating and have brought our Petition to this early vote.*

*Sincerely,*

*Edwin Chamberlain*

*President, Phi Epsilon Phi Corp.*

COVER - Rensselaer Polytechnic Institute from the air showing the main campus on the front cover and the field house, temporary freshman dorms and apartments for married students on the back.



## OFFICERS OF ADMINISTRATION

Livingston Waddell Houston, E., LL.D., D.Eng.  
*President*

Sanford Lockwood Cluett, C.E.  
*Vice President*

Matthew Albert Hunter, D.Sc.  
*Dean of the Faculty*

John Williams Doty, C.E.  
*Vice President*

Ray Palmer Baker, Ph.D., LL.D.  
*Dean of Students*

Kenneth Pomeroy Applegate, E.E.  
*Secretary*

Howell Arvon Jones, B.S.  
*Treasurer*



## THE HISTORY OF RENSSELAER POLYTECHNIC INSTITUTE

Rensselaer Polytechnic Institute is the oldest school of engineering and science in any English-speaking country in the world. The school was founded in 1824 by Stephen Van Rensselaer to promote the "application of science to the common purposes of life." The man he chose to direct this new venture in American education was Amos Eaton, scientific investigator and educator with a genius for simplification in instruction. Eaton, the Institute's first Senior Professor, is generally recognized as the first to use the laboratory method in a regular course in science.

At the present time Rensselaer has approximately one faculty member for every ten students, thus providing the individual attention advocated by the far-sighted Eaton. Its cosmopolitan body of students—a recent count showed representatives from every state and thirty-five foreign countries—still learn by doing, rather than by merely listening. Such a method of instruction requires extensive and up-to-date facilities. Rensselaer provides these facilities through the more than one hundred laboratories located in the five large laboratory buildings on its campus.

In 1835 the Institute granted the first degrees in science and the first degrees in Civil Engineering to be awarded in America or Europe. Since that time Rensselaer has broadened its courses to meet contemporary needs. It now offers courses in Civil, Mechanical, Electrical, Chemical, Aeronautical, Metallurgical and Management Engineering. Also on the curricula are courses in Biology, Physics, Chemistry and Architecture.

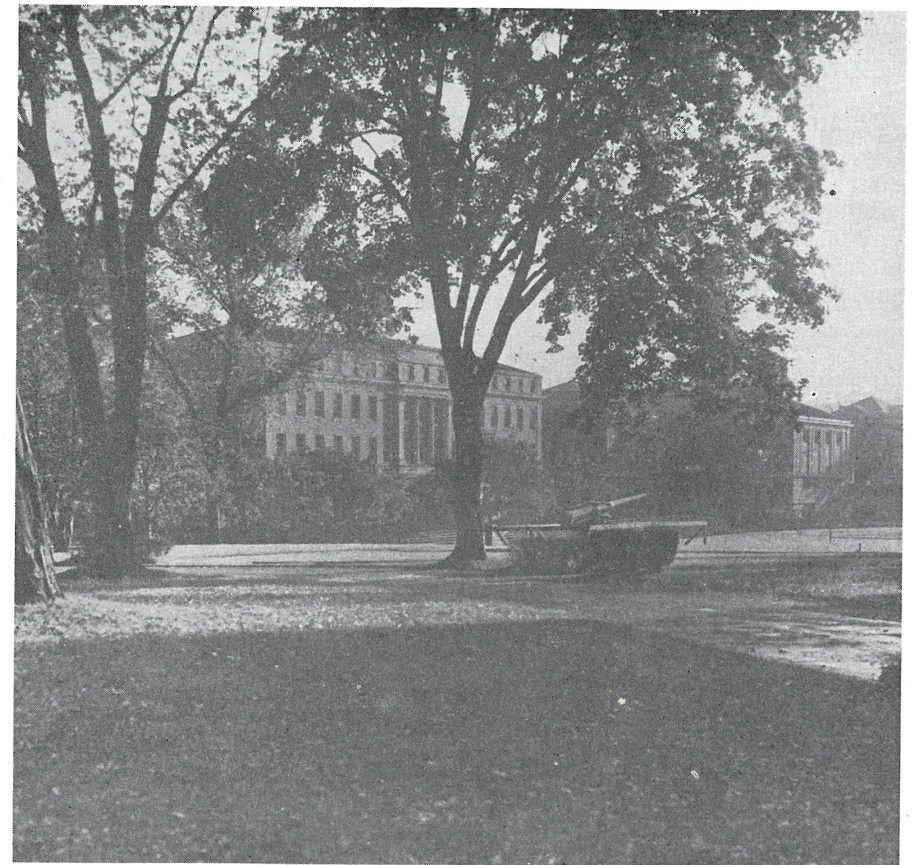
The student enrollment, which has doubled within the last ten years, now totals over four-thousand men. In a recent survey, the scholastic achievement of Rensselaer's present undergraduates rated among the high three in the country. Its graduates have distinguished themselves in every field of scientific and engineering endeavor, from civilian and military construction, design and development to key participation in the atomic fission project.

Rensselaer Polytechnic Institute is fully accredited by the American Association of Colleges and Universities and by every Scientific and Engineering Accrediting Agency which has supervision over its activities. Its modest endowment of \$12,000,000 places it thirty-fourth in the size of its endowment among the leading universities in the United States.

On October 14 of this year, R.P.I. celebrated its 125th Anniversary. The Right Honorable Louis St. Laurent, Prime Minister of Canada; Charles E. Wilson, President of General Electric Company; Eugene Holman, President of Standard Oil of New Jersey; Hiland G. Batcheller, President of Allegheny-Ludlum Steel Corporation; and Armory Houghton, Chairman of the Corning Glass Works were among the notables present to join actively in the proceedings and to extend their heartiest congratulations and well-wishes

for the continued success of the Institute. At the conclusion of the celebration, Dr. Livingston W. Houston, President of the Institute announced the receipt of almost \$3,000,000 during the first two years of its long-term financial program. The ultimate goal is an estimated \$27,000,000 within the next ten or fifteen years to provide for tremendous expansion; additional equipment, laboratories and other facilities; social and athletic housing and facilities; and a larger faculty staff.

As a result of the mammoth developments in technology during the past five years, Rensselaer feels obligated to provide for its students the best and most modern facilities for the study of science and engineering. With these improvements the students of R.P.I. will have the opportunity to make valuable contributions to our modern world.



A VIEW OF THE CAMPUS SHOWING THE RICKETTS BUILDING AND THE '87 GYMNASIUM.



## ACTIVITIES AT RENSSELAER

Every student at R.P.I. contributes to and is a member of the Rensselaer Union which maintains the clubhouse, athletic teams, publications and clubs. The Student Council, made up of class representatives, is headed by the Grand Marshall. The Executive Committee, composed of the heads of the many organizations and sports managers, is presided over by the President of the Union. These are the governing bodies of the Rensselaer Union.

Athletics at the Institute are numerous and varied. Some of the more important teams are those of football, baseball, soccer, basketball, track, swimming and tennis to mention a few. The pride of R.P.I. sports is the lacrosse team. In the past five years of competition the lacrossemen have won sixty contests, tied one, and lost only seven. This record includes an unbeaten string of thirty-five games. In the summer of 1948, the lacrosse team went to England to represent the United States in the Olympic games and did not once taste defeat.

With the completion of a hockey rink in Rensselaer's new field house, a hockey team has been formed.

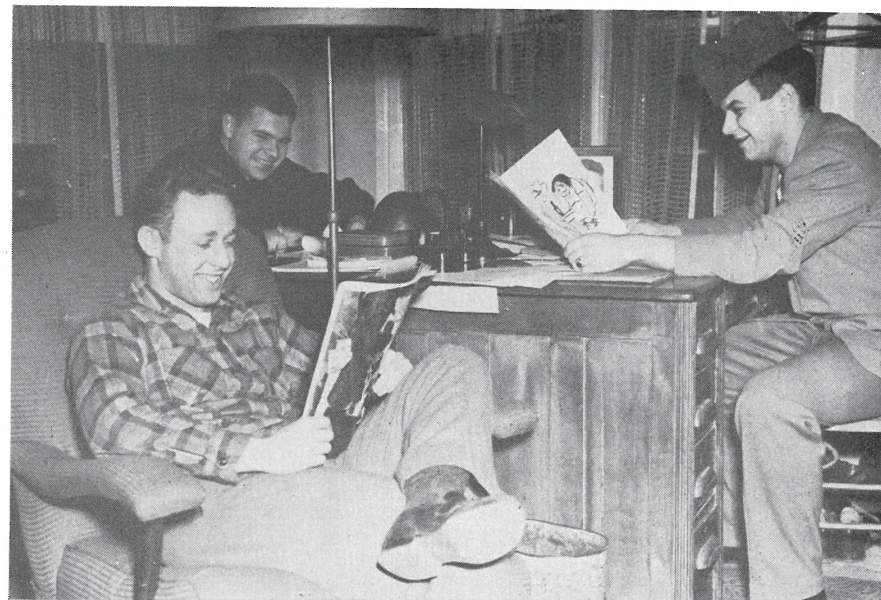
For those men who can't make varsity teams, an extensive program of intramural athletics is carried on. There are both fraternity and independent leagues, trophies being awarded to the Championship teams in each of the various competitions.

Publications at R.P.I. are five in number: the Transit, year book; the Polytechnic, weekly newspaper; the Pup, monthly humor magazine; the R.P.I. Engineer, monthly technical magazine; and the Freshman Handbook.

Organizations such as Phalanx and White Key honor men who are outstanding in extra-curricular activities. For scholastic achievement, Sigma Xi and Tau Beta Pi are among the most notable while the Astrophysical Society, Aero Club, Student Math Society, and many others contribute to increased technical knowledge.

Social activities at the Institute are not lacking. Three large formal dances a year highlight the social season which is further augmented by the glee club, Campus Serenaders, Song Fest, Grand Marshall Week, informal dances, WHAZ broadcasts, sports spectacles, plays, and many other events.

Fraternities at Rensselaer are given a free hand by the school. Although the fraternities represent a minority of the student body, the fraternity organization is strong enough to control most campus activities.



## THE HISTORY OF PHI EPSILON PHI FRATERNITY

Phi Epsilon Phi Fraternity was founded in 1921 at Rensselaer Polytechnic Institute by nine letter-men, who were dissatisfied with the then existent fraternity groups on the campus. It was established as a fraternity free of racial and religious prejudice, based on the ideals of activity, service, scholarship and fellowship.

In the twenty-eight years of its continuous existence, Phi Epsilon Phi has risen to become one of the five outstanding fraternities at Rensselaer. We have contributed an exceptionally large numbers of athletes, student leaders, editors, and sports managers. At present we have letter-men in football, baseball, track and other varsity sports; senior and junior editors of three campus publications and members of many honorary and professional fraternities and societies. Last spring our softball team won both the Inter-fraternity Conference and School Championships. This term we are leading in the Inter-fraternity sports program, having retired the horse-shoe crown and being runner-up in touch football.

Phi Epsilon Phi has a very active alumni group which now numbers well over three hundred. This group has shown its loyalty and strength by



**FRANCIS A. BROWN**

Junior. Architecture. Architecture Society. Canterbury Club. Camera Club. International Club. Alpha Phi Omega (Scouting, Ex-Treasurer).

**SAMUEL H. CHENEY, JR.**

Senior. Chemical Engineering. Junior Varsity Lacrosse. Newman Club.

**RAYMOND V. CZERWINSKI**

Senior. Civil Engineering. Junior Varsity Lacrosse.

**DUANE W. DAVIES**

Junior. Aeronautical Engineering. Boxing Club. Ex-House Manager Institute of Aeronautical Science. Astrophysical Society.

**RICHARD W. DUGGAN**

Senior. Architecture. Building Construction Engineering. President of Junior Class. Chairman of Junior Prom Committee. President of Inter-Fraternity Conference. Architecture Society.

**HARLAND E. FARGO**

Senior. Chemical Engineering. Ex-Treasurer RACE (Rensselaer Association of Cooperative Engineers). Ex-Vice President of RACE. Ex-President of RACE. Treasurer of American Institute of Chemical Engineers. Phi Lambda Upsilon (Chemical Engineers).

**LEWIS K. FELLEISEN**

Senior. Metallurgical Engineering. Scalp and Blade. Newman Club. Newman Technologist. "PUP" (Humor Magazine, Apprentice).

**WILLIAM E. FINNEY**

Senior. Mechanical Engineering. Tau Beta Pi. Pi Tau Sigma (Mechanical Engineering).

**DAVID R. FRASER**

Sophomore. Metallurgical Engineering.

**ROGER C. GILCHREST**

Senior. Electrical Engineering. Camera Club. Alpha Phi Omega (Scouting). LCR (Electrical Engineering Society). AIEE (American Institute of Electrical Engineers).

**THOMAS J. GILLARD**

Sophomore. Mechanical Engineering. "PUP" (Humor Magazine, Junior Staff). Glee Club.

**FRANKLIN R. HELT**

Sophomore. Electrical Engineering. Student Fellowship. Freshman Glee Club. N.R.O.T.C. Dance Band.

**HERBERT J. HILDEBRANDT**

Sophomore. Electrical Engineering. Student Fellowship. Alpha Phi Omega (Scouting). Christian Union.

**HENRY C. HONECK**

Sophomore. Physics. Freshman Tennis. Camera Club. Chess Club. "PUP" (Humor Magazine, Apprentice). Glee Club.

**WILLIAM A. JACOBI**

Senior. Mechanical Engineering. Junior Varsity Lacrosse. Rifle Club. A S M E (American Society of Mechanical Engineers)

**GERALD KASS**

Sophomore. Civil Engineering. Camera Club. Freshman Lacrosse. J. V. Football. RPI Engineer (Technical Magazine, Feature Staff). NROTC.

**JAMES B. KIRKLAND**

Senior. Mechanical Engineering. Vice-President of Freshman Class. Freshman Fling (Publicity Chairman). Varsity Track. Newman Club. ASME (American Society of Mechanical Engineers).

**ROBERT G. KOOB**

Junior. Mechanical Engineering. House Manager. SAE (Society of Automotive Engineers).

**GUY C. LIGON**

Sophomore. Electrical Engineering. Freshman Baseball.

**ARCHIBALD LONGWORTH LOVE III**

Graduate. Electrical Engineering. R.P.I. Players. Outing Club. Radio Club. LCR (Electrical Engineering Society, Secretary). Meteorological Society. American Institute of Electrical Engineers. WHAZ (R.P.I. Broadcasting Station). IRE (Institute of Radio Engineers). Secretary, Phi Epsilon Phi Corporation.

**GEORGE MEER**

Senior. Chemist. R.P.I. Players. American Chemical Society. "PUP" (Humor Magazine, Apprentice). Golf Club. Aero Club. Secretary, Phi Epsilon Phi.

**NORMAN H. MEYERS**

Sophomore. Electrical Engineering. Student Fellowship. Alpha Phi Omega (Scouting). Radio Club. ROTC Newspaper Staff. RACE (Rensselaer Association of Cooperative Engineers).

**JAMES K. MITCHELL**

Junior. Civil Engineering. Scalp and Blade. Dance Band (51'ers and Knight's of Rhythm). ASCE American Society of Civil Engineers). R.P.I. School Band. I.F.C. Representative.

**C. STUART NAHLES**

Junior. Management Engineering. Student Fellowship. ROTC Newspaper ("Sound Off," Editor in Chief). Society for the Advancement of Management. "PUP" (Humor Magazine, Apprentice). Ex-Treasurer of Phi Epsilon Phi. Cadet Council (ROTC). Society for American Military Engineers.

**ROBERT B. PAGE**

Junior. Mechanical Engineering. Assistant Manager of Sports. Inter-Fraternity Handbook Staff. WRPI (Campus Radio Station). "PUP" (Humor Magazine, Editor-in-Chief). Pi Delta Epsilon (Journalism). Executive Committee, Rensselaer Union. Commander of Phi Epsilon Phi.

**RICHARD PAPENFUSS**

Sophomore. Chemical Engineering. Chess Club. Freshman Football. Hockey Team. American Chemical Society. American Institute of Chemical Engineers.

**RICHARD A. PETERS**

Senior. Physics. President Astrophysical Society. Chess Club Physics Society.

**DONALD R. QUIMBY**

Senior. Management Engineering. WRPI (Campus Radio). Society for the Advancement of Management.



**WILLIAM J. ROBINSON**

Junior. Chemical Engineering. Varsity Baseball. "R" Letter Club. Ski Team.  
"Sound Off" (ROTC Newspaper, Staff).

**CLIVE N. ROSS**

Senior. Chemistry. Glee Club. Golf Club. Radio Club. "PUP" (Humor Magazine, Junior Board). "Transit" Staff (Yearbook). Fraternity Handbook Committee. Inter-Fraternity Dance Committee.

**CORNELIUS SCHATMEIER**

Junior. Civil Engineering. Steward, Phi Epsilon Phi.

**FRANCIS J. SHAW III**

Junior. Management Engineering. Newman Club. Society for the Advancement of Management.

**JOHN R. SHEA**

Sophomore. Architecture.

**GUY P. SIMONI**

Sophomore. Civil Engineering. Freshman Basketball. J. V. Basketball.

**RICHARD R. STAEBLER**

Senior. Mechanical Engineering. Ex-Treasurer of Phi Epsilon Phi. Ex-Secretary of Phi Epsilon Phi. Ex-Commander of Phi Epsilon Phi. Campus Serenaders.

**DAVID C. THOMAS**

Junior. Civil Engineering. American Society of Civil Engineers.

**HENRY T. VAGT**

Senior. Electrical Engineering. American Institute of Electrical Engineers. Institute of Radio Engineers. Radio Club. Newman Club.

**EUGENE V. VALEHRACH**

Junior. Mechanical Engineering. Management Engineering. Freshman Lacrosse. Glee Club. Newman Club. Chess Club. Treasurer of Phi Epsilon Phi.

**WILLIAM N. WEED**

Junior. Mechanical Engineering. NROTC Pistol Team.

**HOWARD I. WEISSLEADER**

Junior. Electrical Engineering. Radio Club. Freshman Lacrosse. Ski Team. Pledgemaster. J. V. Lacrosse. Institute of Radio Engineers.

**FRANK B. WILLIAMS**

Sophomore. Mechanical Engineering. Gymnastics Club. Canterbury Club.

**PAUL A. WILLIAMS**

Senior. Metallurgical Engineering. Glee Club. Camera Club.

**ROBERT W. WINTERS**

Junior. Metallurgical Engineering. Assistant Manager of Sports. American Society of Metals.

**EDWARD J. ZIEMER**

Junior. Chemical Engineering. Freshman Soccer.

**FROM OUR FRIENDS IN SIGMA CHI —**

January 15, 1950

Brothers in Sigma Chi:

At the time of the first presentation to the Fraternity of a petition by Phi Epsilon Phi at Rensselaer Polytechnic Institute, I wrote for the petitioners a brief and factual report stating why I had urged them to petition Sigma Chi. Will you again read that statement as quoted below?

"Sigs in our section of the Country have long considered a Chapter at Rensselaer Polytechnic Institute. We feel that Phi Epsilon Phi is well qualified to become that Chapter.

"This Local, established in 1921, was visited by representatives from all the Active and Alumni Chapters in our Province. I have personally worked long and intimately with them. Following our recommendation to Phi Epsilon Phi, they petitioned for a Chapter.

"There is little I can add to the hosts of recommendations except to point out to the Brothers that R. P. I. was placed on the Preferred List at Seattle by vote on the floor, that there is here no question of qualification of their Alumni, that they have been long and well established.

"Sigma Chi in this Province and in this area will accomplish much in the chartering of Phi Epsilon Phi at Rensselaer Polytechnic Institute.

"Every Sigma Chi brother, Active and Alumni, in this Province recommends them to you."

To simply say that Sigs in this Province were wounded and felt that the Fraternity might well have honored our studied recommendations is to put it mildly. On the other hand we did feel that certain unfortunate and inescapable circumstances had brought about the defeat of the petition. It was the last of a rather long series of petitions. Other contraversial issues were at hand. The Petitioning Local was unable to get it's informative pamphlet and endorsements into the mail due to the untimely and unexpected death of their most active Alumnus who was preparing the material.

I trust that the material here presented by the Actives of the petitioning group will be well received. I again assure the Fraternity that Phi Epsilon Phi richly deserves an overwhelmingly decisive affirmative vote on this it's second Petition for Charter. They, to a man, have stuck to their determination and have conclusively proven to me that our Fraternity will add new lustre to The White Cross by granting their Petition.

In Hoc Signo Vincas,

(Signed) WILLIAM H. MEYER

Grand Praetor Eastern New York-Quebec Province

My dear Brothers:

You again have before you a petition from the Phi Epsilon Phi local of Rensselaer Polytechnic Institute. Troy, New York. I sincerely trust that



you will give this your careful and unbiased consideration.

If you are against any further expansion under any conditions then naturally your vote will be in the negative but if you favor a gradual, carefully planned expansion program whereby Sigma Chi will install chapters only in outstanding colleges and universities, favorable to fraternities, and only when we are able to install a chapter recognized and equal in strength to the best existing chapters on the campus, then your vote in this instance necessarily must be in the affirmative.

More important is the fact that you must determine now whether or not you want any more chapters in the East because quite frankly it is highly improbable that you will ever again have an opportunity to vote on such an outstanding petition from a group located in the East as is now being presented by Phi Epsilon Phi of Rensselaer Polytechnic Institute, and surely all will agree that if we are to expand at all it should be in the East where we need strength.

RPI needs no introduction. It is the oldest school of science and engineering in this country. It ranks with M. I. T. Educationally, financially and by any yardstick, it is one of the greatest colleges in this country. Furthermore, it is very favorable to the fraternity system. Moreover, it is an American college with American ideals, free from any Red tinge. It is a conservative college inoculated with American ideals.

Phi Epsilon Phi, the petitioner, is at least the equal of all the other splendid fraternities on the campus. It is common knowledge that Phi Epsilon Phi has been offered charters by practically all fraternities not represented at RPI. They own a very fine fraternity house. They have recognized an outstanding alumni. They have a selective group of active men numbering forty-three and twenty of the best pledges on the campus.

The Phi Epsilon Phi petition has the wholehearted and unanimous support of every chapter in New England and all the neighboring chapters, including Union, Colgate and Syracuse. It has the support of every alumnus I have been able to contact.

There are the facts upon which I base my sincere recommendation that the Fraternity give this petition an overwhelmingly affirmative vote, thus giving Sigma Chi its rightful place on the campus of one of the foremost engineering schools of this country.

Sincerely and fraternally,  
(Signed) L. G. BALFOUR

810 Broadway  
Nashville, Tenn.  
December 5, 1949

To the Chapters and Officers of Sigma Chi —  
Dear Brothers:

In my extensive travels to the Colleges and Universities of the United States and Canada I found that Rensselaer Polytechnic Institute, Troy, N. Y., rated as one of the oldest and best technical institutions in America.

It is a College fraternity school of long standing. A number of our best fraternities have chapters there. Sigma Chi should be represented since it is one of the best opportunities remaining in the East where we need a few more chapters. This is our chance to get a good local well established owning its house which is said to be free of debt.

I see no valid reason whatever for any opposition to this strong petition. In fact there should be no cessation to expansion as long as we can get high grade chapters in the best Colleges and Universities.

I have never voted for a petition that has not made good as a chapter of Sigma Chi and no fraternity has a better grade of chapters than we. May we give this petition from Rensselaer Polytechnic Institute our whole hearted support.

Yours in Sigma Chi,  
(Signed) WM B. RICKS, *Past Grand Consul*

December 23, 1949

Dear Brothers:

I am particularly interested in the petition of Phi Epsilon Phi at Rensselaer for a charter of Sigma Chi.

I have been interested in this group for a number of years and was quite pleased when they made their choice of Sigma Chi. I personally hope our entire fraternity will get behind them and give them a favorable vote when their petition comes up for consideration.

This is a wonderful institution, with a very fine local who have set their hearts on Sigma Chi. I cannot recommend them too highly.

Sincerely and fraternally yours,  
(Signed) BEN S. FISHER, *Past Grand Consul*

December 22, 1949

Dr. William H. Meyer  
149 Hooker Avenue  
Poughkeepsie, New York  
Dear Brother Meyer:

Several weeks ago I received a letter from Phi Epsilon Phi, local at Rensselaer Polytechnic Institute, regarding their efforts to obtain an active chapter charter in Sigma Chi.

As I told you at the Grand Council Meeting, I had a very fine opportunity to talk about R. P. I. and this group of fellows when Dr. Livingston Houston, President of R. P. I. spent some time at our offices. Dr. Hous-





ton told me that the group of men in Phi Epsilon Phi were just about as fine as any group on his campus and he was most enthusiastic about them and assured me that we could expect a good chapter if a charter was granted. He told me some personal things about some of the boys that were much to their credit.

I have reason to think that R. P. I. is increasing its influence as a top-flight technical school and I think that it is an institution where we might well be represented. I know that you thoroughly believe in this petition and I have high regard for your opinion and so I want to add my voice to those which are in favor of this group. You are quite at liberty to show this letter to others.

With best good wishes.

Sincerely yours,

(Signed) E. S. FARROW, *Grand Trustee*

December 31, 1949

Officers and Active Chapters

And Alumni Chapters of Sigma Chi Fraternity.

Dear Brothers:

Our fraternity means so much to us that when a proposal is made that we expand and place a chapter of Sigma Chi on another campus we pause and do some serious thinking.

I have done a great deal of thinking over the petition which has come to us from a group on the campus of that famous institution — Rensselaer Polytechnic Institute. I have talked with numerous individuals,—I have visited the campus of that institution,—I have visited the house and talked with members of the petitioning group, Phi Epsilon Phi.

This study of the facts has enabled me to reach a fair, sound and unbiased decision as to the attitude Sigma Chi should take toward these petitioners.

I most heartily endorse the petition of Phi Epsilon Phi of Rensselaer Polytechnic Institute located at Troy, New York.

Phi Epsilon Phi has a long and excellent history. They own a fine house on a large lot on a residential street,—all unencumbered. The active members and alumni comprise a group worthy of the honor of being taken into Sigma Chi Fraternity. They will, I am sure, strengthen our ranks and wear the White Cross in a manner in keeping with our cherished traditions and the high and noble ideals of our Founders.

I earnestly recommend that this petition be given a hearty affirmative vote of approval.

(Signed) R. D. WORKMAN, *Grand Tribune*



## TROY ALUMNI CHAPTER OF SIGMA CHI FRATERNITY

July 24, 1948

The Sigma Chi Fraternity  
35 East Wacker Drive  
Chicago 1, Illinois

Dear Brothers:

The Troy Alumni Chapter of Sigma Chi has voted to give its full support to Phi Epsilon Phi, a local fraternity at Rensselaer Polytechnic Institute, in its petition for a Sigma Chi charter. Many of our members have visited the chapter house this spring, in an endeavor to become familiar with the boys that make up the present active chapter. The president of their alumni corporation has met with us in order to present the attitude of their alumni group towards the chapter itself, and towards the petitioning of Sigma Chi.

It is our opinion that this is a well established group, with a strong and interested body of alumni, whose support extends back over 26 years to the founders of the local fraternity.

Our group has, for some time, felt the desirability of having an active Sigma Chi chapter at R. P. I. We feel that this long established and financially sound local fraternity could immediately take over the responsibility of furthering Sigma Chi on this campus.

Yours in Sigma Chi,  
(Signed) ROBERT HAMPTON, Gamma Zeta '46  
Secretary

## SYRACUSE CENTRAL NEW YORK ALUMNI CHAPTER OF SIGMA CHI Syracuse, N. Y.

January 25, 1950

All Alumni Chapters  
Sigma Chi Fraternity  
Dear Brothers:

Although thoroughly disappointed by the failure of their first petition to one Fraternity for a charter, Phi Epsilon Phi of Rensselaer Polytechnic Institute, at Troy, N. Y., have repeteritioned for a charter.

Again, we of the Syracuse-Central New York Alumni Chapter wish to go on record as wholeheartedly endorsing this enthusiastic group who obviously are not content with a "second best" national affiliation.

The spirit and sincerity shown by their second petition justify our endorsement of them in the first instance, and fortify our desire to have them admitted to our order now.

Sigma Chi will be the winner if it affiliates this excellent and well established group in the oldest and one of the foremost engineering schools in the country.

We sincerely and wholeheartedly urge your affirmative vote on their second petition.

Fraternally yours,  
(Signed) CHARLES H. THOMPSON, *President*  
Syracuse Central New York Alumni  
Chapter of Sigma Chi.

## GAMMA ZETA CHAPTER OF SIGMA CHI FRATERNITY UNION COLLEGE

Brothers of Sigma Chi:

We of Gamma Zeta at Union College strongly advocate the weighing of each petitioning group on its individual merits. Here is a well organized group, a dominant force on campus, a vigorous independent organization which has conquered its growing pains, and has maintained a selectivity which has enabled it to stay at the top in the R.P.I. fraternity system for almost thirty years.

Sigma Chi looks for three basic characteristics in a petitioning group — Phi Epsilon Phi has them:

1. Located at a well known college, of favorable outlook on fraternities, and of high scholastic standing.
2. Financially well situated with a strong and active alumni body.
3. Overwhelming enthusiasm for Sigma Chi.

On the first two counts their record speaks for itself and on the last, and probably the most vital, we are proud to go to bat for them any time. We have examined them and have not found them wanting.

Phi Epsilon Phi can be nothing but an asset to our order and we strongly urge you to confirm our views with your vote.

Very truly yours,  
(Signed) PAUL R. PALMER, *Consul*

## GAMMA OMICRON CHAPTER OF SIGMA CHI FRATERNITY COLGATE UNIVERSITY

January 15, 1950

To the Brothers of Sigma Chi Fraternity,  
Brothers:

It is with great pleasure that the Gamma Omicron Chapter at Colgate University endorses the petition of Phi Epsilon Phi, local fraternity at Rensselaer Polytechnic Institute, for a Sigma Chi Charter.



Members of our chapter have made visits to Phi Epsilon Phi on various occasions and have returned with favorable comments; we also have an alumnus in Troy who recommends them highly.

With the appearance of a second petition, we are again behind the efforts of Phi Epsilon Phi, feeling that their strong determination alone is a worthy sign that they truly deserve Sigma Chi. We also believe that it would be for the best interests of both Rensselaer Polytechnic Institute and Sigma Chi Fraternity if this cherished ambition of Phi Epsilon Phi were attained and they were granted membership in Sigma Chi.

Fraternally yours,  
(Signed) ROBERT A. WEST, *Consul*  
January 15, 1950

PSI PSI CHAPTER OF SIGMA CHI FRATERNITY  
SYRACUSE UNIVERSITY

February 8, 1949

Executive Committee  
Sigma Chi Fraternity  
Dear Brothers:

I would like to take this time to notify you of the unanimous vote of our chapter on the petition of Phi Epsilon Phi, Rensselaer Polytechnic Institute.

Many members of our chapter have close contact constantly with this school and this chapter, and know it to be outstanding in every way. We know it would be an excellent addition to Sigma Chi.

This summer at the Grand Chapter meeting this petition was placed on the preferred list and no action has been taken regarding it, since. That is the reason we are writing this letter.

We highly endorse the petition of this chapter and hope some early action can be taken on it.

Sincerely and fraternally,  
(Signed) FREDERICK D. HOLCOMBE  
*Consul, Psi Psi Chapter*

GAMMA LAMBDA CHAPTER OF SIGMA CHI FRATERNITY  
McGILL UNIVERSITY

February 3, 1949

TO WHOM IT MAY CONCERN:

At a regular meeting of the active Chapter of Gamma Lambda (McGill) on February 3, 1949, an informal vote was taken approving the petition to join the Sigma Chi Fraternity by the Phi Epsilon Phi Fraternity of Rensselaer Polytechnic Institute. The vote was unanimously favourable.

Gamma Lambda Chapter, therefore, urges Sigma Chi Fraternity to take immediate steps to put this petition to a formal vote.

Fraternally,  
(Signed) D. GEORGE PETRIE, *Consul*

From the Faculty of Rensselaer Polytechnic Institute  
OFFICE OF THE PRESIDENT

June 25, 1948

Dr. William H. Meyer, Grand Praetor  
New York Province of Sigma Chi  
27 Hooker Street  
Poughkeepsie, N. Y.  
Dear Dr. Meyer:

I have been asked by Mr. Edwin Chamberlain, President of the Phi Epsilon Phi Alumni Corporation, and Mr. Norman Coons, Treasurer of the Corporation, to write you concerning the application of Phi Epsilon Phi for a charter in the national fraternity of Sigma Chi.

I am very happy to recommend Phi Epsilon Phi as one of the most active and desirable of the fraternities on the Rensselaer campus. It has existed as a local fraternity for 26 years. It owns its own house and it has 45 active members. Furthermore, it is a member of the Interfraternity Council and it has been active in R.P.I. athletics and extra-curricular activities.

I am certain that the boys who make up the membership in Phi Epsilon Phi will be welcome members of Sigma Chi and that Sigma Chi will be proud of them.

The Board of Trustees at Rensselaer has actively encouraged the existence of strong fraternity organizations on the campus, and I am sure that it will welcome even greater effort by the fraternities. It believes that fraternity life is one of the best preparations for leadership and skill in human relations.

In view of these facts which are presented to you, I feel certain that the acceptance of the local fraternity of Phi Epsilon Phi into the national fraternity of Sigma Chi, will strengthen both Sigma Chi and the fraternity organization on the Rensselaer campus.

Sincerely yours,  
(Signed) L. W. HOUSTON

OFFICE OF THE DEAN OF STUDENTS

August 10, 1948

Dr. William H. Meyer  
New York Province of the Sigma Chi Fraternity



27 Hooker Street  
Poughkeepsie, New York

Dear Doctor Meyer:

The officers of Phi Epsilon Phi Fraternity, which has applied for membership in the Sigma Chi Fraternity, have asked me to write to you in support of its application. It is a pleasure to be able to do so.

Since the inception of the organization, I have known its members intimately and have held them in high regard. I have been particularly impressed by the progress which they have made at the chapter house at 58 Pinewoods Avenue and the atmosphere which they have created. The fact that, without exception, their neighbors have been appreciative in their comments, has given me considerable satisfaction.

As the Administrative Officer primarily responsible, I am happy to endorse the application which is being submitted to you. We shall be as happy to welcome the Sigma Chi Fraternity to the campus.

Very sincerely yours,  
(Signed) RAY PALMER BAKER

#### COOPERATIVE AND EXTENSION DIVISION

December 1, 1949

Mr. William H. Meyer  
New York Province of Sigma Chi  
27 Hooker Street  
Poughkeepsie, New York

Dear Mr. Meyer:

It gives me a great deal of pleasure to write this letter in support of the petition of Phi Epsilon Phi Fraternity for affiliation with Sigma Chi Fraternity.

Phi Epsilon Phi was founded as a local fraternity at Rensselaer Polytechnic Institute in 1921 and has continued since then without interruption in its activities. The very fact that it has been able to continue and prosper for twenty-eight years is, I think, quite significant.

As Faculty Advisor to our Interfraternity Council I have had the opportunity to closely observe the development of Phi Epsilon Phi and to keep in rather close touch with its activities. I have visited its chapter house frequently and have always been impressed by the high caliber of its membership.

Throughout its existence Phi Epsilon Phi has taken an active part in fraternity and general campus activities and has provided its due share of student leaders.

I am happy to recommend Phi Epsilon Phi without any reservation and am confident that it will be a chapter that Sigma Chi can be proud of.

Sincerely yours,  
(Signed) STANLEY B. WILTSE, *Chairman*  
Cooperative & Extension Education  
Faculty Advisor Interfraternity Council

From the Fraternities of R. P. I.

INTERFRATERNITY COUNCIL  
RENSSELAER POLYTECHNIC INSTITUTE  
TROY, NEW YORK

Dr. William H. Meyer, Grand Praetor  
New York Province of Sigma Chi Fraternity  
27 Hooker Street  
Poughkeepsie, New York  
Dear Dr. Meyer:

Upon the suggestion of Phi Epsilon Phi Fraternity, I am taking this occasion to comment in the attitude of the existing fraternities toward additional national fraternities on this campus and also upon the standing of Phi Epsilon Phi on this campus.

It has definitely been established that the present enrollment of the Institute will be maintained and it is vitally necessary and desirable that we have additional national fraternity chapters on the campus. Thus, the Council approves and would welcome a chapter of Sigma Chi.

Phi Epsilon Phi has long been established on this campus and it is my sincere and honest belief that it would be a definite asset to your outstanding national organization. Their members are very active in campus affairs and my personal contact with them has always been favorable. Many Phi Epsilon Phi men are outstanding members of our many varsity athletic teams and other campus organizations. Their scholastic rating, at the last time the scholarship rating of fraternity members was taken, was very good.

In the event that you would like to have any additional information, don't hesitate to write me.

Sincerely yours,  
(Signed) CHRIS A. CHRISTOPHER  
President, Interfraternity Council

ALPHA TAU OMEGA  
DELTA MU CHAPTER

May 22, 1948

Dr. William H. Meyer, Grand Praetor  
New York Province of Sigma Chi



27 Hooker Street  
Poughkeepsie, New York  
Dear Sir:

I have learned from Phi Epsilon Phi Fraternity that they are seeking national affiliation with your fraternity, Sigma Chi. I should like, on behalf of Alpha Tau Omega, to highly recommend this group to you.

Phi Epsilon Phi is well regarded on the Rensselaer campus. Many of their members are active both in sports and extracurricular activities. I personally have many good friends in their group and have found them to be a well rounded bunch of men who cannot be tagged with any particular label such as "athletes," "grinds," or "socialites," but rather who can qualify as a well integrated social fraternity.

Phi Epsilon Phi has been established at Rensselaer for over twenty-five years and is one of the strongest fraternities, local or national. They would certainly be an asset to any national organization.

Fraternally yours,  
(Signed) DANIEL C. REGAN  
Worthy Chaplain (Vice- Pres.)

CHI PHI  
THETA CHAPTER

December 7, 1948

Dr. William H. Meyer  
27 Hooker Street  
Poughkeepsie, New York

Dear Dr. Meyer:

I have been requested to write to you on behalf of the Phi Epsilon Phi Fraternity here at Rensselaer. I know several of the brothers personally, and they are all men of whom any fraternity would be proud.

The men of Phi Epsilon Phi are very active on the campus in the various extra-curricular activities, and have been for as long as I've been here. They are quite well established in fraternity circles here, being established at R. P. I. in 1921, and maintaining good relations with all the other fraternities. They are particularly active in the various inter-fraternity competitions — sports, scholastics, and parade floats being notable.

I understand that they show considerable interest in their chapter house, which has no mortgage outstanding, and which they have recently renovated inside and out.

Sincerely yours,  
(Signed) RICHARD BUMSTEAD, Pres.

ALPHA CHI RHO

January 14, 1949

Dear Dr. Meyer:

The purpose of this letter is to add my most hearty recommendation to the many others you must have received concerning the Phi Epsilon Phi Fraternity at Rensselaer Polytechnic Institute. My experiences with this fraternity have been a little unusual, and I feel, put me in a position to give a qualified recommendation.

I came to Rensselaer in September, 1947, as a transfer student from Trinity College in Hartford, Connecticut. While at Trinity I became a member of Alpha Chi Rho Fraternity, but when I entered Rensselaer there was no chapter of Alpha Chi Rho here. However, one of my friends, also a student of Rensselaer, was a member of Phi Epsilon Phi, and he took me under his wing and invited me to many of the social functions at the fraternity.

Perhaps this is not unusual, but the manner in which I was treated by his fraternity brothers certainly was unusual. When I was with them they gave me the same feeling that I had when at my own fraternity at Trinity College — a feeling of good fellowship. I cannot thank them enough for all they added to my school life last year.

From this you can see that I am anxious to make this letter of recommendation as favorable as possible. Phi Epsilon Phi has what I think a good fraternity should have — men of good character, good fellowship, and excellent spirit. In my opinion there is no better fraternity at Rensselaer, and it is a fine example for my own chapter, the newly formed Delta Phi Chapter of Alpha Chi Rho, to follow.

Sincerely yours,  
WARREN HUNT

DELTA TAU DELTA  
UPSILON CHAPTER

May 18, 1948

Dr. William H. Meyer  
Sigma Chi Fraternity  
27 Hooker Street  
Poughkeepsie, New York

Dear Dr. Meyer:

It has come to our attention that one of our local fraternities at Rensselaer, Phi Epsilon Phi, is seeking affiliation with Sigma Chi. Since this house has been associated with Phi Epsilon Phi both socially and politically



for a number of years, we thought that you would be interested in our opinions.

Politically this house is a very strong member of the campus group to which we belong. In a very recent campaign it was our privilege to elect a Grand Marshall of the Rensselaer Student Union. During this campaign Phi Epsilon Phi unselfishly gave of her time and abilities until their efforts nearly dwarfed our own and by far exceeded the assistance received or expected from the other houses in our group. Cooperation of this type has long been missing from this campus and speaks volumes for the members of Phi Epsilon Phi. They are a very popular member of the major political party on this campus.

Their social accomplishments have been exemplary. Located in a dignified residential section of Troy they carry on their social activities with a sureness and grace that belies their association with a technical institute. Individually and as a group they maintain social ethics beyond refute and are more than capable of administering to the high social standards of Sigma Chi.

As you might have gathered, Dr. Meyer, we think a great deal of Phi Epsilon Phi and do not hesitate to recommend them very highly. They have a strong Alumni with very good Alumni advisors and we feel, with all honesty, that this chapter will make a very worth-while addition to Sigma Chi.

Fraternally yours,  
(Signed) CHARLES F. McMORROW, *Pres.*

LAMBDA CHI ALPHA  
EPSILON — ETA ZETA CHAPTER

December 17, 1948

Dr. William H. Meyer  
27 Hooker Street  
Poughkeepsie, New York

Dear Mr. Meyer:

We understand that Sigma Chi is considering Phi Epsilon Phi fraternity at Rensselaer Polytechnic Institute for membership in its national fraternity. Epsilon Eta Zeta of Lambda Chi Alpha at Rensselaer sends its highest recommendation to Sigma Chi for Phi Epsilon Phi. Our chapter has been a member of Lambda Chi Alpha since 1937 and during our association with Phi Epsilon Phi we have found them to be a progressive fraternity active on the campus especially in sports and publications.

Sincerely yours,  
(Signed) JAMES M. MOORE, *Pres.*

THETA CHI

June 22, 1948

Dr. William H. Meyer  
27 Hooker Street  
Poughkeepsie, New York

Dear Dr. Meyer:

For some little time the active chapter of Phi Epsilon Phi at Rensselaer Polytechnic Institute has been doing everything in its power to have its petition to Sigma Chi accepted.

Their decision to do this has been reached after a great deal of study and discussion in not only the active chapter but also among the many interested alumni.

It has been the writer's good fortune to be able to sit in with them in large and small groups and get the stimulation of the sound thinking as they sought national affiliation.

Much of the approach was worked out after discussion with Mr. L. G. Balfour, as the writer did not want to discuss Sigma Chi without at least contacting someone in that organization.

At this time it is a privilege to commend this group to you for favorable consideration of their petition to become an active chapter of Sigma Chi. This is done with full knowledge of the President of the school, of which the writer is a term trustee, for he too must favor such a change.

Very truly yours,  
(Signed) EARL D. RHODES, *National President*

PHI KAPPA TAU

December 8, 1949

Dr. William H. Meyer  
149 Hooker Avenue  
Poughkeepsie, New York

Dear Sir:

I am writing this letter in behalf of Phi Epsilon Phi, as a petition for membership in Sigma Chi.

As a member of Phi Kappa Tau, a national fraternity with a chapter at Rensselaer, I have had many opportunities to watch the work and development of Phi Epsilon Phi. In addition, I am well aware of the value of being a member of a national fraternity.

Phi Epsilon Phi has always been a leader on our campus, and at the moment their presence is felt more than at any time since I have been at Rensselaer. Their individual members are leaders in campus activities, in the classrooms, and on the athletic fields. This year they are one of the



most feared houses in the Barker Trophy race, our interfraternity sports competition. Phi Epsilon Phi's home on Pinewoods Avenue is one of the nicest and most adequate at Rensselaer. All or any of these reasons would be enough to make Phi Epsilon Phi a valuable addition to any national fraternity. Yet the fine spirit and sincerity of the whole fraternity, is the dominating impression left with anyone who come in contact with the fraternity as a body.

In conclusion, I feel that Phi Epsilon Phi at Rensselaer would make an ideal chapter for Sigma Chi.

Sincerely,  
(Signed) WILLIAM J. COUGHLIN, *President*

#### ALPHA SIGMA PHI FRATERNITY

December 14, 1949

Dr. William H. Meyer  
27 Hooker Street  
Poughkeepsie, N. Y.

Dear Sir:

I have been asked to write a letter of recommendation for Phi Epsilon Phi, a local fraternity here at Rensselaer Polytechnic Institute. There is hardly space in one letter to cover all of their activities, so I shall cover a few which I consider as outstanding.

The fraternity has done very well in rushing of prospective members and during the past few years have pledged and initiated several groups of very active men. We have always found them to be tough competition in interfraternity athletics, and that they possess the traits of good sportsmanship which enables them to be good losers as well as winners.

Our house is in the same neighborhood as Phi Ep Phi, and we are as close in interfraternity relations as we are geographically. We live in one of the better residential sections of Troy, about one and one-half miles from the campus. That we get along well with our neighbors is attested by the fact that a large portion of the membership of both houses is transported to school by accommodating neighbors.

Phi Epsilon Phi has been active as a local fraternity on the campus for a number of years and few organizations survived the war years as well as they did. Their financial structure seems to be sound and I understand that they have an active alumni group.

As an organization they are well thought of by other fraternities; individually they have a house of pretty swell fellows. I personally know Bob Page, their Commander, Dick Belcher, their Vice-Commander and several other brothers.

With men of this caliber making up the house it is my belief that a National Fraternity could not help but be bettered by adding this chapter to its roster.

Sincerely and fraternally,  
(Signed) RICHARD L. NEAL, *President*  
730 Union Street  
Schenectady, New York  
January 20, 1950

#### PHI EPSILON FRATERNITY RENSSELAER POLYTECHNIC INSTITUTE

TROY, N. Y.

JANUARY, 1950

To the Grand Council and Active and Alumni Chapters of the  
Sigma Chi Fraternity:

We, the undersigned members of Phi Epsilon Phi, a local fraternity at Rensselaer Polytechnic Institute, Troy, New York, respectfully petition that we be granted a charter of the Sigma Chi Fraternity.

We are sincerely appreciative of the high honor we are again seeking and realize that the granting of a charter of the Sigma Chi fraternity is a favor of great magnitude and significance. Yet, we believe that the standards, traditions, character, and history of our Alma Mater, our fraternity, our alumni, and of the individual members of Phi Epsilon Phi whose names are affixed hereto, qualify us to petition Sigma Chi Fraternity for this great honor and privilege.

A century and one quarter ago, Stephen Van Rensselaer founded the institute and dedicated it to 'the application of science to the common purposes of life.' Since that time, Rensselaer has broadened its courses to meet contemporary needs. With the development of the industrial revolution, the early emphasis on science naturally shifted to emphasis on engineering. Mechanical, Electrical, and Chemical Engineering were added to the curricula, later followed by Aeronautical, Management, Metallurgical Engineering, and Architecture. Additional emphasis has also recently been given to the study of Biology, Physics, and Chemistry. Today Rensselaer provides undergraduate and graduate study in all four fields: engineering, science, architecture, and management.

Phi Epsilon Phi was founded in 1921 at Rensselaer Polytechnic Institute by nine letter men, who were dissatisfied with the then-existent fraternity groups on the campus, under circumstances not unlike those which challenged your illustrious forebears at Miami University. They established a fraternity free of religious prejudice, based on the ideals of character, service, scholarship, and fellowship. In the 28 years of its continuous exist-



ence, Phi Epsilon Phi has risen to become one of the five outstanding fraternities at Rensselaer. We have contributed an exceptionally large number of athletes, student leaders, editors, and sports managers. At present we have letter men in football, baseball, track, and other varsity sports, senior and junior editors of two campus publications, members of many honorary and professional fraternities and societies, and inactive group of new members, many of whom have already begun the repetition of this cycle of achievement. This year as in the past, despite the strong competition of existing chapters, we expect to pledge twenty of the best men on campus.

Under the guidance and financial management of local alumni officers, we not only weathered the difficult war years, but were able, in the spring of last year, to pay off our last debt obligation, insuring for us a debt-free ownership of our present house, valued at \$35,000. We have an active building fund which will lead to the construction of a new house on a lot which we have under lease from Rensselaer Polytechnic Institute at a preferred site on the new fraternity row.

The present structure, which is excellently maintained, is adequate for our present needs and houses 30 of the 53 active members. It is located on a large lot in the better residential district of Troy, surrounded by spacious lawns, beautiful trees, and shrubbery. Facilities include a large living room, excellently suited to dances and social functions, a library, a kitchen and dining room, study rooms and dormitory facilities for between 35 and 40 men.

Our decision to forego local status and to seek affiliation with Sigma Chi has been the outgrowth of two events of the last 2½ years; first, retirement of the mortgage on our house, and second, initiation of our first legacy, the son of one of our founders. In the belief that these and other evidences of our maturity would qualify Phi Epsilon Phi to petition a leading national fraternity, two formal meetings of the alumni and active chapter members were called. Fact-gathering committees were appointed and discussions were held leading to recommendations and formal vote. It was our carefully considered opinion, almost 2 years ago, that Phi Epsilon Phi should abandon its established local status only for affiliation with an outstanding national fraternity whose ideals and standards would be in greatest harmony with our own. Our choice, therefore, was, and with increased enthusiasm still is, Sigma Chi.

The fraternity system is well established at Rensselaer Polytechnic Institute. There are, at present, 23 national fraternities on the campus. The current administration, represented by Dr. Livingston W. Houston, President of our Institute, heartily approves and endorses this petition to Sigma Chi. All of the national fraternities now on the campus endorse our petition, as evidenced by letters written in our behalf. We feel singularly fortunate

in having had the friendship, advice, and sponsorship of L. G. Balfour, your distinguished Past Grand Consul, and the assistance and sponsorship of Dr. William H. Meyer, Grand Praetor of the Eastern New York-Quebec Province, in support of the preparation and discussions, leading to the presentation of this and our original petition. We enjoy the warm friendliness and encouragement of our neighboring Sigma Chi chapters and the alumni chapters at Troy and Syracuse.

By unanimous vote, we the members of Phi Epsilon Phi, with the sincerity of men who realize the great significance of membership in Sigma Chi, respectfully submit this petition. We the undersigned are confident that we can and will maintain the high standards of Sigma Chi tradition, and earnestly hope for your support and acceptance.

Should our petition for a charter be granted, we will recognize the Grand Chapter of the Sigma Chi Fraternity as our supreme legislative body and the Grand Council of said Fraternity as our executive and judicial authority. We agree to abide by and obey all laws, ordinances, and the ancient customs of the Fraternity and to obligate ourselves to promote its welfare and the best interests as becomes a worthy and acceptable chapter of the Sigma Chi Fraternity.

WILLIAM J. ANDRE  
JOHN D. ATWELL  
LAWRENCE S. BALDWIN  
EDSON L. BARLOW, JR.  
RICHMOND D. BELCHER  
ROBERT H. BEMAN  
STUART O. F. BRAND  
FRANCIS A. BROWN  
SAMUEL H. CHENEY, JR.  
RAYMOND V. CZERWINSKI  
DUANE W. DAVIES  
RICHARD W. DUGGAN  
HARLAND E. FARGO  
LEWIS K. FELLEISEN  
WILLIAM E. FINNEY  
DAVID R. FRASER  
ROGER C. GILCHREST  
THOMAS J. GILLARD  
FRANKLIN R. HELT  
HERBERT J. HILDEBRANDT  
HENRY C. HONECK  
WILLIAM A. JACOBI  
GERALD KASS  
JAMES B. KIRKLAND  
ROBERT G. KOOB  
GUY C. LIGON

ARCHIBALD LONGWORTH LOVE III  
GEORGE MEER  
NORMAN H. MYERS  
JAMES K. MITCHELL  
C. STUART NAHLES  
ROBERT B. PAGE  
RICHARD PAPENFUSS  
RICHARD A. PETERS  
DONALD R. QUIMBY  
WILLIAM J. ROBINSON  
CLIVE N. ROSS  
CORNELIUS SCHATMEIER  
FRANCIS J. SHAW III  
JOHN R. SHEA  
GUY P. SIMONI  
RICHARD R. STAEBLER  
DAVID C. THOMAS  
HENRY T. VAGT  
EUGENE V. VALEHRACH  
WILLIAM N. WEED  
HOWARD I. WEISSLEADER  
FRANK B. WILLIAMS  
PAUL A. WILLIAMS  
ROBERT W. WINTERS  
EDWARD J. ZIEMER