



The Delta Psi Sig

Rensselaer Polytechnic Institute

March 2011

Inside this issue:

Consul's Corner	1
Scholarship at ΣΧ'	2
Our new Sweetheart	3
ΣΧ's Eco-Conservation Chair	3
Why I Donated to the Capital Campaign	4



I am pleased to report that the state of the chapter is strong. With the passing of election season, the chapter house is brewing with capable and enthusiastic new leaders who are eager to implement fresh ideas. Together, we are determined to perpetuate the chapter's positive trajectory. The purpose of my article this month is to talk about the direction the chapter will take over the upcoming year. We aspire to further improve upon recent academic success, and furthermore, implement an extensive public relations program in the RPI and Troy communities.

Delta Psi's departing leadership deserves special recognition for transforming scholarship into our first priority. Past Consul Adam

Consul's Corner

Weltz '11 and Scholarship Chairman Mike Cunningham '12 revamped our scholarship program last fall, with significant results; Delta Psi's academic ranking rose by 35% to 15/29 campus fraternities! This sets Delta Psi above the all-fraternity GPA, representing a major accomplishment for the chapter. As we look ahead to the upcoming year, it is essential for us to maintain momentum and further improve upon Delta Psi's academic ranking. The time has come for Delta Psi's academic program to reflect the rising reputation of the chapter. One year from today, I am confident we will be known as much for our academic leadership as we are for our leadership in student-run organizations.

The second pillar of the chapter's strategy for the upcoming year is public relations. To our neighbors on Pinewoods Avenue, Sigma Chi is known for its community service outreach during the fall season. Events like our annual Haunted House and Leaf Rake are not only a lot of fun for the chapter, but they give Sigma Chi an honorable name in our community.

Continued on page 2



Scholarship at Delta Psi

The past year has marked a major overhaul in the chapter's approach to academics, beginning with the addition of the dedicated study room this past August. Additionally, under my direction, a reward system for good grades was introduced, the physical and electronic back-work archive was reorganized and updated, and the chapter made more use of the services offered by the school, mainly the Advising & Learning Assistance Center.

Beginning with the work of the previous Scholarship Chair, Chaz Goodwine, the position of Faculty Academic Advisor has been recreated and subsequently filled by Professor John

Heim, clinical professor of Economics at RPI. As Faculty Academic Advisor, Dr. Heim has already begun to provide academic counsel and personal recommendations for brothers. This next year, his role and responsibilities will be more defined. He will more actively work with future Scholarship Chairs to further improve the chapter's academic efforts.

The most notable academic accomplishment of the chapter this past year is the 0.25 GPA increase between the spring and fall semesters of 2010, bringing the house to a 2.95, and pulling ahead of the All Fraternities' GPA of 2.94. Jameson Price, the new Scholarship Chair, has big plans

to push the house GPA past the All Men's GPA in the next year. He will be working closely with John Heim and the newly formed Scholarship Committee to provide even more exciting changes.

On March 30, Jameson hosted Sigma Chi's semester Scholarship Dinner. Already in the beginning of his term, the event has been greatly improved. RPI Greek Dean Matt Hunt attended, with the addition of John Heim and other RPI professors. This is a great step forward for both the scholastic direction of the chapter and the chapter's relationship with RPI.

In Hoc,

Michael Cunningham '12
Pro Consul

over the upcoming year.

In closing, I want to reiterate that Sigma Chi is in terrific standing. The chapter leadership is full of new blood, and the success of the past is sure to continue. Alumni, I urge you to join us in our success and rekindle your relationship with the active chapter. It is an historic time to get involved, and the bonds of Sigma Chi are unbreakable. Please visit the chapter whenever the opportunity arises; we look forward to seeing you!

In Hoc Signo Vincas

Ken Sobel '12
Consul

Continued from page 1

The chapter aims to expand its community service outreach. Already, the chapter has committed 60 additional hours of community service before the

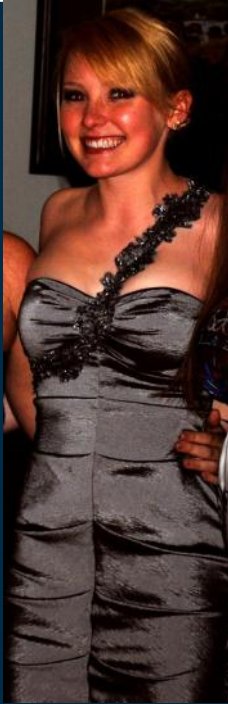
close of the semester. In addition, Delta Psi undergraduates are committed to taking a more active role in campus activities.

Last month, Delta Psi Sigs participated in the Society of Women Engi-

neers' Quiz Bowl event. The team took third place and donated the \$100 prize to the Huntsman Cancer Institute. Efforts like these bring new luster our Order, and we strive for significant improvement in this area



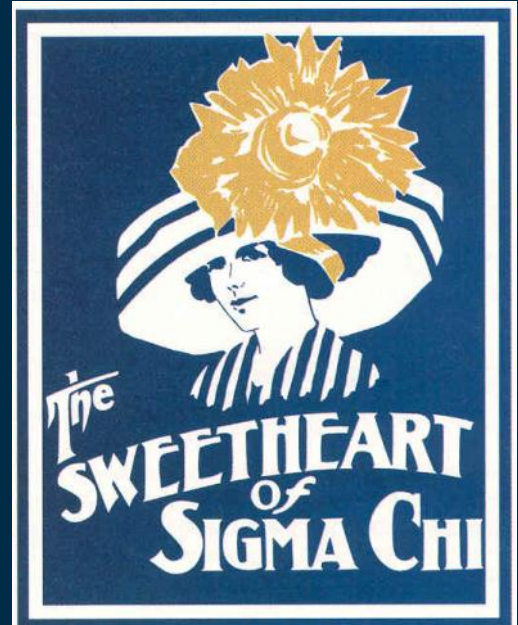
Our New Sweetheart



At our Annual Spring Sweetheart formal we announced the newest Sweetheart of the Delta Psi chapter. Congratulations to Alexandra Smith! Alexx, as Brothers call her, is a senior at RPI studying in Biology. She is a wonderful part of the house, helping us in our studies and always cooking delicious baked goods for us after house meeting. She is truly an integral part of the house and the Brothers are truly honored to call her their sweetheart. Congratulations!

In Hoc,

Christopher Roche '13



Σ X's Eco-Conservation Chairman

With the expansion of the brotherhood, there have been more opportunities for new positions at the house. This combined with increased concern over bills and the waste present in the house led the chapter into making the decision to bring back the Eco-Conservation Chair. The ECC is a position whose goal is to ensure that the house becomes an Eco-Friendly environment while maintaining its livability. I was fortunate enough to be elected to the position. The early responsibilities of the position were mainly concerned with monitoring energy waste. If Brothers

had left their room, left music playing, or other forms of energy waste the ECC could level fines against them. The fines were very small, usually a quarter, and were mainly used to raise awareness. After only a week, this system had made significant strides to reduce energy consumption. It was decided to elect a Co-ECC to monitor Old House to increase the monitoring coverage. Brother Dennis Dominguez stepped up and he began to function as the Old House ECC to complement the New House ECC. To expand awareness further a competition between the two houses was planned. Change was collected for points in each

house and energy fines were tracked for each side of the house. The house with the greatest amount collected and the fewest fines won. In the end over \$20 was collected, and will either be donated to Sorority charity events or more energy-friendly alternatives in the house. Over the past months, the ECCs have also installed new recycling cans, and fixed the timers for the Σ X lights above the front entrance. In the future be on the lookout for more creative energy saving techniques and methods.

In Hoc,

Nick Hyman '13
ECC



Why I Donated to the Capital Campaign

Two undergraduate's perspectives

I've heard many people say that they would have left RPI if it had not been for Sigma Chi. While I am not one of these people, I can say that I obtained the true value of my education because of my experiences

Why did I donate? I have never lived in house. I have never held a position. I will only be an undergraduate at Sigma Chi Delta Psi chapter for one year. So why would someone like me want to donate to the house? I donated because of all the memories and moments I shared with all of my brothers. I donated because I want a house I am proud to go back to. I donated because I wanted Sigma Chi to be known as the best fraternity on campus. Sigma Chi has given more than plenty of reasons to donate. From the friends I made, to the moments we shared, I will never forget what Sigma Chi has given me. I just hope that through my donation, Sigma Chi will give future brothers similar experiences.

IHSV,
Joe Salomone '11

in Sigma Chi Delta Psi. An example of this was during my first interview with a company. It was during my Sophomore year, and the Proctor & Gamble recruiter grilled me with behavioral based questions. Had I not had relevant examples from serving as Alumni Tribune and Philanthropy Chairman at the time, I would have choked, and probably left the interview completely demoralized. Landing that job opened the doors for an eight month Co-op with a different company that I liked even better. My experiences in Sigma Chi have made ethical business decisions come second nature, while allowing me to build close relationships with those that I work with.

I came to college with one brother, and I will leave with more brothers than I can quantify by some trivial number. I can't imagine being closer to anyone than I

am with my Delta Psi brothers. RPI is a stressful place, and I have had more frustrating days than I care to admit. But something that means more than anything in the world to me is being able to walk into a brother's room at the chapter house, holding back tears from a frustrating day and leave the room laughing with a smile from ear to ear. That is what brotherhood means to me.

Having attended Sigma Chi Horizons, Balfour Leadership Training, Grand Chapter, Grand Council, and several Province Workshops, I now have close brothers all over the country. The Tennessee Sigs might be the friendliest, the California Sigs might be the most laid back, and the Northeast Sigs might be the fastest talking, but looking past our differences we are bonded together by the ideals and values of Sigma Chi. What I love about the brotherhood in Sigma

Chi is that it never stops expanding both qualitatively and geographically. I cherish the brotherhood I've been fortunate to be a part of, and I look forward to the brotherhood that lies ahead.

I used to be terrified of public speaking, but Sigma Chi has given me countless opportunities to speak in front of both brothers and strangers. I've learned how to give and receive feedback openly and objectively in my interactions with brothers. I've learned the importance of serving the underprivileged in our community. Sigma Chi has taken my weaknesses and turned them into strengths.

I pledged money to the capital campaign to ensure that Sigma Chi Delta Psi continues to be a place that fosters insurmountable brotherhood while turning weaknesses into strengths for future generations to come.

In Hoc,

Nathaniel Murray '11



Sigma Chi ΔΨ

Sigma Chi Fraternity
58 Pinewoods Ave,
Troy, NY 12180

Phone: (518) 274-4239

E-mail: deltapsi.sigmachi@gmail.com

Web: <http://www.sigmachi-rpi.org>

Sigma Chi House Corporation

PO Box 494

Averil Park, NY 12018

Or visit our website at:

www.deltapsisigs.org

Or the chapter website at:

www.sigmachi-rpi.org

Upcoming Events

April 9th and 10th - The Annual Delta Psi Alumni Weekend. Come back to 58 Pinewoods to enjoy our clambake and dinner. Renew the bonds of Brotherhood with Brothers of all years. Please RSVP to christopher.anthony.roche@gmail.com.

April 29th to the 30th - RPI's Annual Relay for Life. The Brothers will be out raising money for the American Cancer Society by walking all night

May 19 - 23 - Great Western Trip to Mission Viejo/Newport Beach, Southern California, with hosts Chris "Zoomer" Serocke '73 (serocke@cox.net , 949-632-9609); and Dan "Spurt" Burt '69 (dan.j.burt@gmail.com (713) 488-5728)

